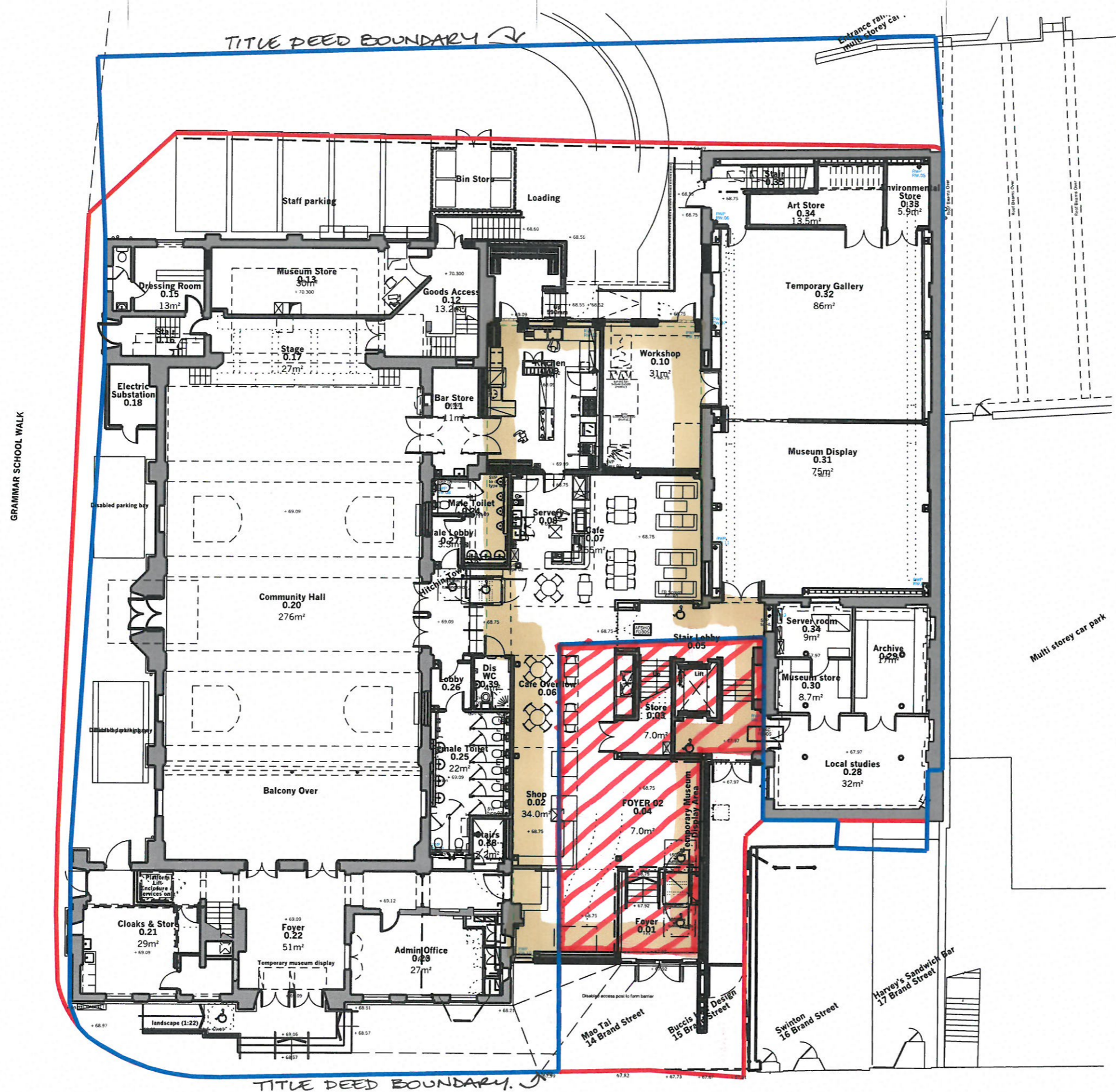


Do not scale from drawing
Dimensions are to be
checked on site
If in doubt please ask



NEW BUILD GIFA
 GF = 302 m² + FF = 257 m²
 TOTAL = 559 m²

EX 14/15 BRAND ST.
 GIFA = GF 113.7 m²
 FF 88.6 m²
 TOTAL = 202 m²

C7	Door handing updated	24/07/14	AY
C6	Museum store 0.14 and dividing wall omitted. Amendments shown clouded	10/04/14	AY
C5	Museum display general layout added	04/04/14	AY
C4	Position of fin wall amended following detailed survey of 16 Brand Street public wall.	12/03/14	AY
C3	Updated to reflect extent of demolitions. Amendments shown clouded	07/02/14	AY
C2	Amendments shown clouded	31/01/14	AY
C1	ISSUED FOR CONSTRUCTION	11/11/13	AY
E	Line of Junction added for Party Wall agreement	01/11/13	NC
T3	ISSUED FOR TENDER ADDENDUM Scheme amended to incorporate W0.53, W0.54, W0.55, DO.86 added.	26/07/13	AEY
D	Scheme updated ISSUED TO DESIGN TEAM FOR INFORMATION / COORDINATION	12/07/13	AEY
C	Plans added, scheme updated to incorporate 14/15 Brand Street ISSUED TO DESIGN TEAM FOR INFORMATION / COORDINATION	27/06/13	AEY
B	Scheme updated, ISSUED FOR CLIENT COMMENT	26/06/13	AY
T2	detail references omitted section references amended RE-ISSUED FOR TENDER	10/12/12	AY
T1	ISSUED FOR TENDER	30/11/12	AY
A	ISSUED FOR INFORMATION AND COORDINATION	08/10/12	AY

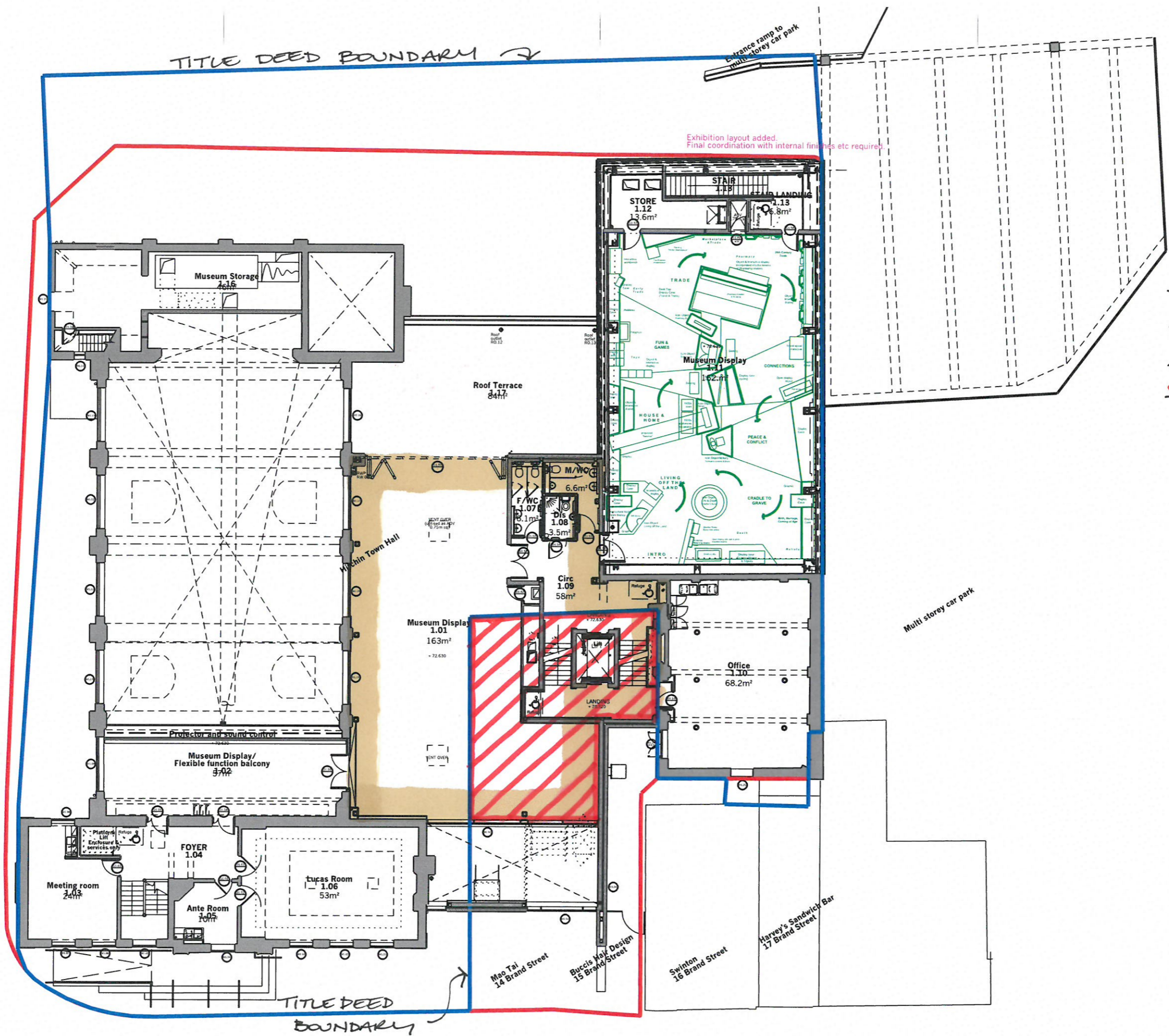
Hitchin Town Hall

Proposed plans
 Ground floor
 198 (04)003
 Date: 01/11/13
 Scale: 1:100 @A1
 Checked by: NC

buttress fuller alsoop williams - architects
 31 33 Princess Street, Manchester, M2 4EF Telephone +44 (0)161 236 3303
 Fax +44(0)161 236 3603 web site www.bfw.co.uk email info@bfw.co.uk
 Buttress Fuller Alsoop Williams Ltd is Registered in England and Wales: 5863573

Do not scale from drawing
Dimensions are to be
checked on site
If in doubt please ask

GRAMMAR SCHOOL WALK



NEW BUILD GIFA

EX 14/15 BRAND ST. GIFA.

CONSTRUCTION FINAL ISSUE

C5	FINAL CONSTRUCTION ISSUE	10/04/15	AY
C4	Door handings updated	24/07/14	AY
C3	Exhibition layouts added.	04/04/14	AY
C2	Position of fin wall amended following detailed survey of 16 Brand Street public wall. Position of ADV relocated	12/03/14	AY
C1	ISSUED FOR CONSTRUCTION	11/11/13	AEY
T3	ISSUED FOR TENDER ADDENDUM ADV duct added.	26/07/13	AEY
D	ADV to window/door added scheme updated	12/07/13	AEY
C	Files added, scheme updated to incorporate 14&15 Brand Street	26/06/13	AEY
B	Scheme updated ISSUED FOR CLIENT COMMENT	26/06/13	AY
T2	Structural Grid added Detail references omitted Section references amended	10/12/12	AY
T1	ISSUED FOR TENDER	30/11/12	AY
A	ISSUED FOR INFORMATION AND COORDINATION	08/11/12	AY

Hitchin Town Hall

Proposed plans
First floor plan
Date: 01/13
Scale: 1:100 @A3
Checked by: NC

IAD

BRAND STREET